



# HIGH GAIN OMNIDIRECTIONAL ANTENNA 225 to 450 MHz

The **WDA-2245** is a co-linear dipole array designed to work from 225 MHz to 450 MHz. The antenna exhibits exceptional gain in an omnidirectional pattern. Similarly, the **WDA-2245-1** is an omnidirectional dipole designed for slightly less gain yet still designed with compliance to the strictest military specifications. Both antennas are mounted in a sealed dielectric radome to offer mechanical stability and isolation from environmental hazards. They are equipped with a heavy duty spring for vehicular applications in which high velocity impacts are likely. These antennas also offers outstandingly low VSWR pattern for the entire band. Both the WDA-2245 and WDA-2245-1 come with a standard NATO bolt pattern with a durable Type-N connector.

## WDA – 2245

Height: ..... 58 inches  
Diameter (mast): ..... 2 inches  
Diameter (base): ..... 3.5 inches  
Weight: ..... 8 lbs / 3.6 kg

### Band Specifications

Frequency (MHz): .....225 - 450  
SWR: ..... <2.3:1 on 90% of band  
SWR(max): .....3.0:1  
Gain: .....1.5 to 4.1 dBi  
Power(cw): ..... 150+ Watts  
Power(pulse): ..... 225+ Watts  
Polarization: .....Vertical  
Input Impedance: ..... 50 Ω  
Ports: ..... 1  
Connector:..... Type N

## WDA-2245-1

Height: ..... 29 inches  
Diameter (mast): ..... 2 inches  
Diameter (base): ..... 3.5 inches  
Weight: ..... 6 lbs / 2.7 kg

### Band Specifications

Frequency (MHz): .....225 - 450  
SWR(max): .....3.0:1  
Gain: .....0.5 to 2.6 dBi  
Power(cw): ..... 150+ Watts  
Power(pulse): ..... 250+ Watts  
Polarization: .....Vertical  
Input Impedance: ..... 50 Ω  
Ports: ..... 1  
Connector:..... Type N

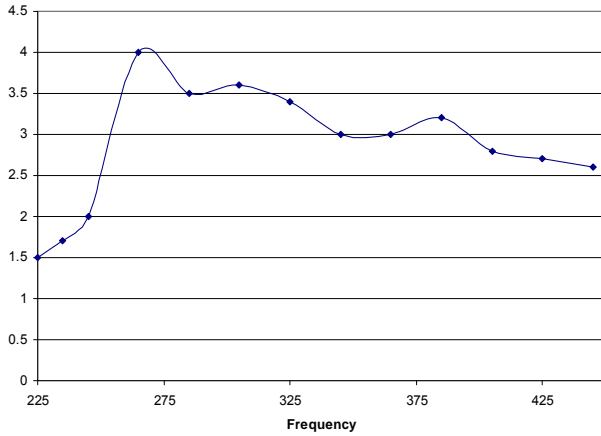


WDA-2245

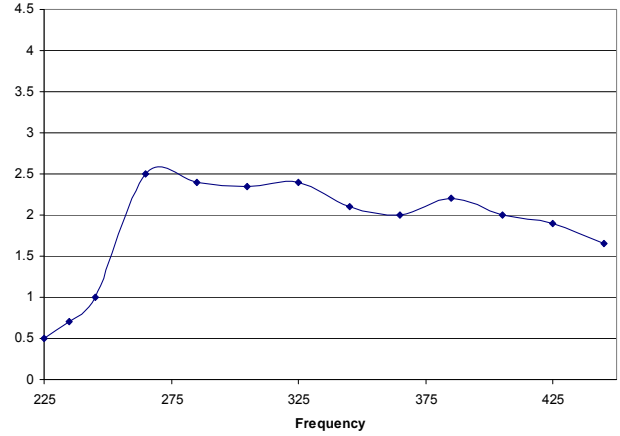


# HIGH GAIN OMNIDIRECTIONAL ANTENNA 225 to 450 MHz

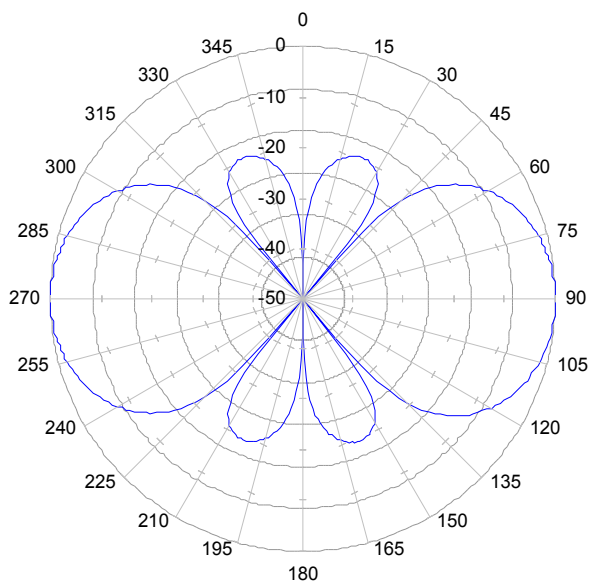
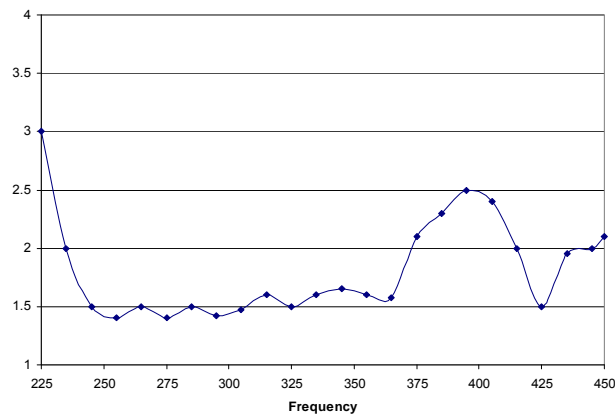
**WDA-2245 Gain [dBi]**



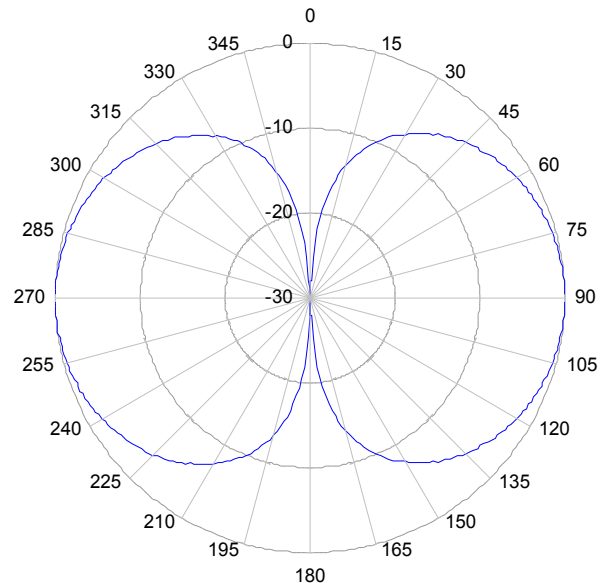
**WDA-2245-1 Gain [dBi]**



**WDA-2245 VSWR**



**WDA-2245 Elevation Pattern at 300MHz**



**WDA-2245-1 Elevation Pattern at 300MHz**